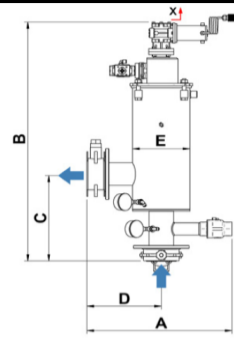


# AUTOJET Self-Cleaning Filter

## AUTOJET L SHAPE

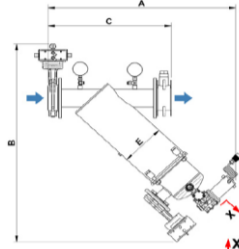
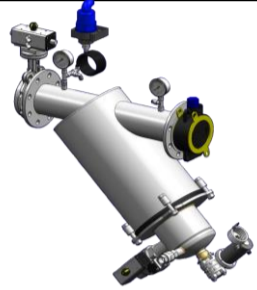


**X** Spazio necessario per la manutenzione  
Length required for maintenance

Filter Model	Filter Short Name	In/Out [DN - Inches]	Area [cm <sup>2</sup> ]	Qmax*[m <sup>3</sup> /h]	AISI 304 [Code]	AISI 316 [Code]	Dimensions [mm]						Weight [Kg]
							A	B	C	D	E	X	
AUTOJET	AJM L 2"/10A	2" BSPP	1500	40	FSAJLLME00001	FSAJLLME00005	540	860	415	308	206	500	28
AUTOJET	AJM L 80/20	DN80	2200	80	FSAJLLME00002	FSAJLLME00006	520	940	506	268	206	650	37
AUTOJET	AJM L 100/35	DN100	3300	140	FSAJLLME00003	FSAJLLME00007	615	1000	506	300	273	650	50
AUTOJET	AJM L 100/40P	DN100	5400	150	FSAJLLME00004	FSAJLLME00008	615	1300	796	300	273	1000	56

Flow rates are referred to filters with 120 µm filtrating mesh and water with temperature of 20 °C and NTU < 1.

## AUTOJET Y SHAPE



**X** Spazio necessario per la manutenzione  
Length required for maintenance

Filter Model	Filter Short Name	In/Out	Area [cm <sup>2</sup> ]	Qmax*[m <sup>3</sup> /h]	AISI 304 [Code]	AISI 316 [Code]	Dimensions [mm]						Weight [Kg]
							A	B	C	D	E	X	
AUTOJET	AJM Y 2"/10A	2" BSPP	1500	40	FSAJYYME00001	FSAJYYME00005	790	770	620	-	206	500	31
AUTOJET	AJM Y 80/20	DN80	2200	80	FSAJYYME00002	FSAJYYME00006	910	985	650	-	206	650	44
AUTOJET	AJM Y 100/35	DN100	3300	140	FSAJYYME00003	FSAJYYME00007	960	1040	720	-	273	650	54
AUTOJET	AJM Y 100/40P	DN100	5400	150	FSAJYYME00004	FSAJYYME00008	1180	1250	720	-	273	1000	62

Flow rates are referred to filters with 120 µm filtrating mesh and water with temperature of 20 °C and NTU < 1.

### INCLUDED ELEMENTS

#### Filtering Elements

Sandwich cartridge with stainless steel AISI 316 support screens, polyester inner mesh (PES) and double EPDM gaskets

Filtration degrees available:

12 - 25 - 53 - 80 - 120 - 200 - 400 - 580 - 810 µm



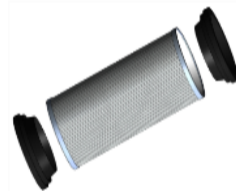
#### AUTOMATION KIT

Controller Saticon 5M 220/230V ac power supply  
Differential pressure gauge  
Activation by pre-set time value or Δp

**OR**

Stainless steel AISI 316 cartridge REPS double layer and double EPDM gaskets

Filtration degrees available: 53 - 110 - 200 - 400 - 800 µm



**Note: for the complete list of components/optionals please refer to AUTOJET data sheet**

### GENERAL DATA

	Materials	Connections	Application limits
<b>Body</b>	AISI 304 - AISI 316	Thread, ISO Flanged	Filtration range 810 ÷ 12 µm PN10 Tmax + 60°C
<b>Cover</b>	AISI 304 - AISI 316		
<b>Support</b>	AISI 316		
<b>Cartridge</b>	PES - AISI 316		
<b>Gaskets</b>	EPDM		

#### Materials upon request

<b>Body-Cover</b>	DUPLEX 2205 - SUPER DUPLEX 2507
<b>Cartridge</b>	PES/TITANIUM - PES/DUPLEX 2205
<b>Gaskets</b>	NBR - VITON - PTFE
<b>Connections</b>	ANSI flanges, victaulic, ISO flanged
<b>PN</b>	16 bar or HIGHER PRESSURE
<b>Temperature</b>	Temperature higher than 60°C